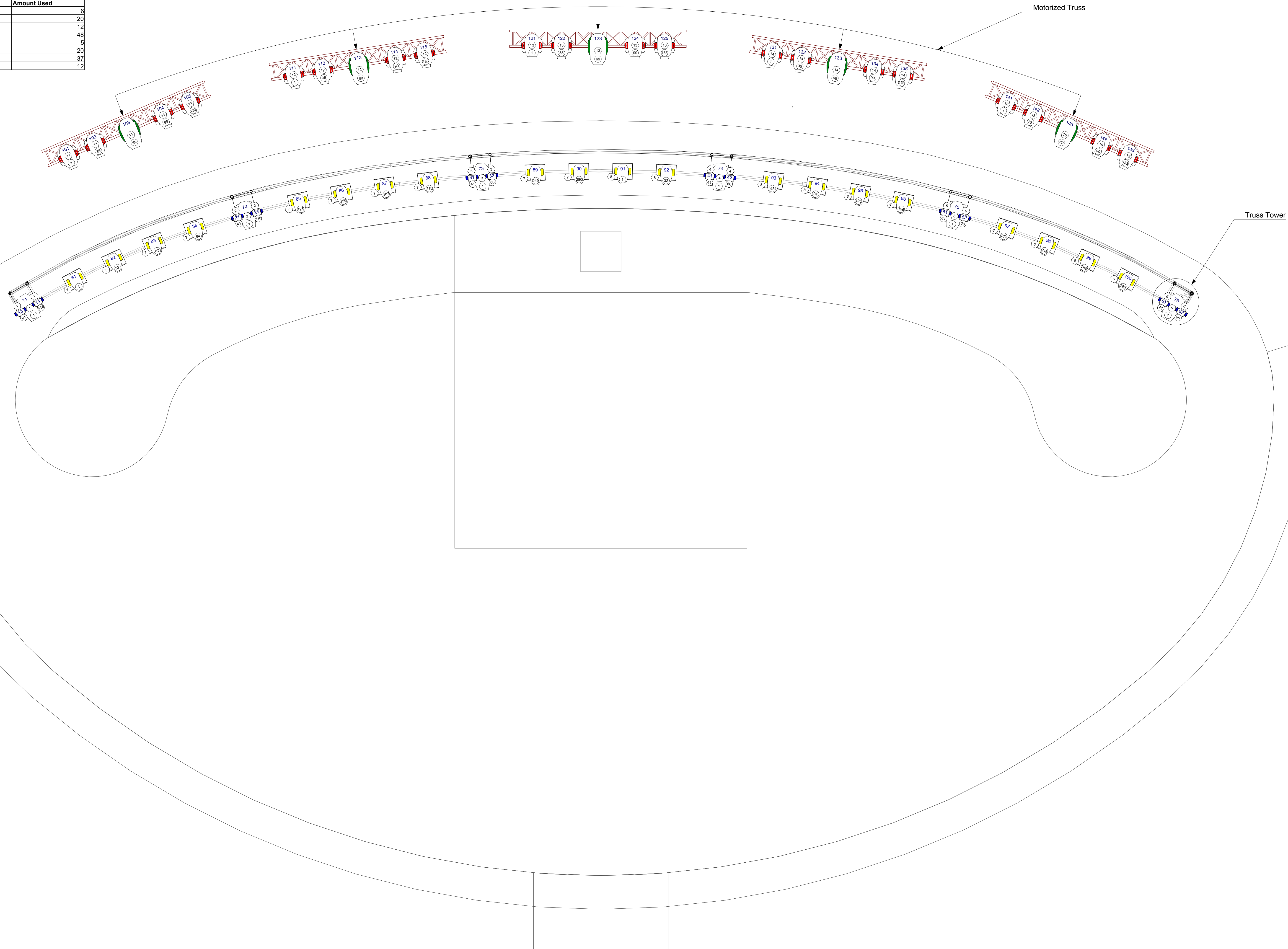


Fixture	Amount Used
AlphaSpot HPE 1500	6
MAC 700 Profile	20
MAC 700 Profile - Ground	12
MAC Aura - Air	48
MAC III Profile - Air	5
MAC Viper Profile - Air	20
Sharpay - Ground	37
VL 3500 Spot - Air	12



Key

Legend

Disclaimer:
 For the avoidance of doubt, Joe Bay is not qualified to determine the structural and electrical appropriateness of the designs and is not responsible and cannot be held liable for any improper engineering, construction, rigging or handling methods or for any improper use of structures or equipment that may be employed to realise the design. It is the responsibility of the Project Manager and not the Lighting Designer to ensure that the design complies with local fire, health and safety regulations. In the event that the design is found not to comply, the Lighting Designer will adjust the design in consultation with the Project Manager to ensure that it does comply with such regulations.

These designs are sole property of Joe Bay and may not be used, reproduced, or manipulated in any way without written consent from Joe Bay.

JOE BAY
 LIGHTING DESIGN
 954.608.8222
 www.joebaylightingdesign.com

Touring Stage 1

Lighting Plot

Lighting & Scenic Design:
 Joe Bay

Drawing
Main Stage - Air
 Drawn By:
 Joe Bay

Date	Drawing Number
1/15/14	1
Scale	
To Fit	
Page Size	
24x36	